





# Hardee County Board of County Commissioners



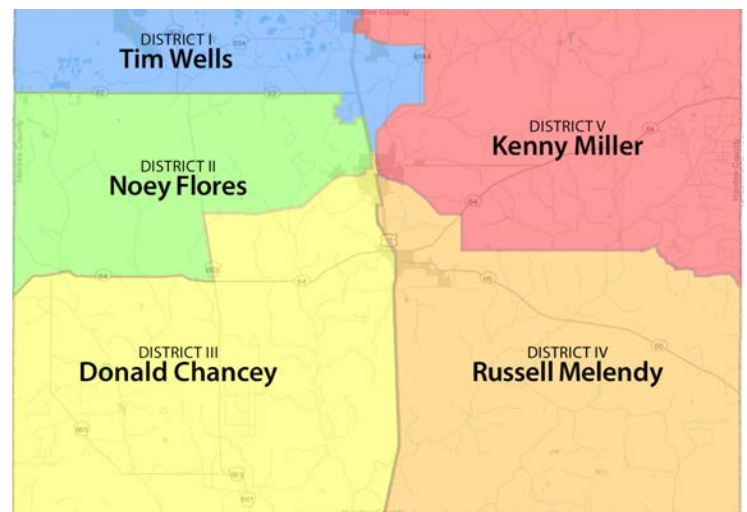
**TIM WELLS**  
District 1

**NOEY FLORES**  
**VICE-CHAIR**  
District 2

**RUSSELL MELENDY**  
**CHAIR**  
District 4

**DONALD CHANCEY**  
District 3

**KENNY MILLER**  
District 5



## Commissioner District Map



message from

# County Manager

*Terry Atchley*



***As the Hardee County Manager,*** I am committed to fostering an environment of opportunity, positivity and collaboration. Our strategic plan is key to keeping the county team focused on and aligned with the goals and priorities set by the community and the Hardee Board of County Commissioners (BOCC). From our crews who maintain roads, parks, swales and buildings; to our staff who process permit applications and utility bills and operate the landfill; to our leadership team and our contracted service providers, we all share a common mission: to deliver superior service and enhance the quality of life.

Everyone is an integral part of the county team. We are here to ensure the highest quality of living possible by providing for the needs and desires of our community.

Strategic planning and budgeting are integral components of successful fiscal management. The strategic plan provides direction, while the budget allocates resources to implement the plan. A strategic plan not linked to a budget is an unfunded dream. On the other hand, resource allocation, without big-picture thinking and community input, would be shortsighted and unresponsive to current and future conditions.

As we continue to grow, Hardee County continues to take intentional, proactive and strategic steps to strengthen our financial position while increasing transparency, innovation and operating efficiencies countywide. With a focus on our people, community trust, economic development, improving our infrastructure and balancing growth, and protecting our environmental resources, our strategic plan guides the annual budget/resource allocation process. It provides a basis and opportunity to evaluate existing programs and funding. It aligns our efforts with our shared priorities and goals. This strategic plan identifies what we will accomplish in the coming fiscal year and guides our work toward our long-term goals.

I look forward to the opportunities that lie ahead. I know this county team is committed to our core mission and to providing services efficiently, effectively and equitably. Together, we will achieve our vision for a resilient future.







# *Building a Vibrant, Resilient Hardee County*



## *Our Vision for the Future*

A strong community of integrity  
where people want to be.



## *Our Mission*

Building a vibrant and resilient environment  
focusing on the health, safety and  
welfare of the community.

## **Our Guiding Principles**

- Promote Economic Development
- Protect Property Rights
- Enhance the Quality of Life for Residents and Visitors
- Protect the Natural Environment
- Provide Housing Opportunities and Choices

# Our Values

**Dedicated to enriching our community and quality of life.**



## Engaged

- Focus on the community.
  - Government
  - Social
  - Civic Organizations
  - Education Partners
  - Business
  - Local and State Stakeholders
- Strive to provide continuous transparent communication.



## Innovative

- Create and capitalize on opportunity.
- Be responsive and persistent.
- Employ our expertise and knowledge.



## Intentional

- Bridge necessities with resources for today and tomorrow.
- Dedicated to achieving our mission and vision for the future.



## Leadership

- Promote effectiveness and efficiency.
- Foster mutual understanding and respect.



# Core Values of the Heartland...

## Encompassing Hardee County as we work toward a more resilient future:

- Stewardship of Natural Resources – Ensuring our environment, wildlife, and natural spaces for future generations.
- Our Water Resources – Providing water supply for people, industry, and agriculture, and water quality for our lakes and streams.
- Our Communities – Celebrating and embracing our diversity, our heritage, and our traditions.
- Future for our Children – Education and job opportunities for all.



Map of the Heartland including Hardee County



Wordle of Community Survey Results

# Strategic Focus Areas

## Building a Vibrant, Resilient Community



Housing



Healthcare



Land Use,  
Transportation  
and Infrastructure



Education/Workforce



Economic Development



Recreation/  
Open Space/  
Environment



Public Services &  
General Government

- **Operate** in a fiscally responsible and stable manner.
- **Improve** the quality of life for all residents and visitors.
- **Promote** a healthy economy through business development, and further economic diversification based on key industries.
- **Promote** cooperation, collaboration and coordination among all government services.
- **Balance** responsible growth and infrastructure with protection, conservation and/or restoration of natural resources and ecological functions.
- **Foster** community connections by providing access to arts, heritage, culture, education and valued amenities.

# Housing



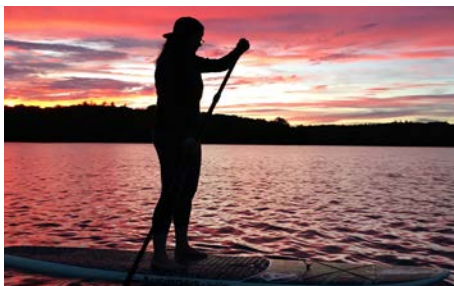
**Promote a robust housing sector that is part of the critical infrastructure supporting a vibrant and resilient community.**

## Strategies:

- 🏠 Develop **infrastructure** to serve existing and new housing including central water and wastewater facilities and bicycle and pedestrian ways when feasible.
- 🏠 Develop a **housing program** to meet community needs including assistance with housing repairs and infrastructure improvements.
- 🏠 Develop **community-based strategies** to address homelessness.
  - Advance policies that recognize housing's role as essential to health.
- 🏠 Encourage **a range of housing opportunities** to address the needs of all economic segments of the community.
  - Support small-scale infill housing in established neighborhoods.
  - Encourage housing options for special needs populations including independent living for seniors, assisted living, memory care, and mental health facilities.
- 🏠 Encourage the provision of **support services**, including transportation options, to allow seniors and those with special needs to remain in their own homes or non-institutional settings.



# Healthcare

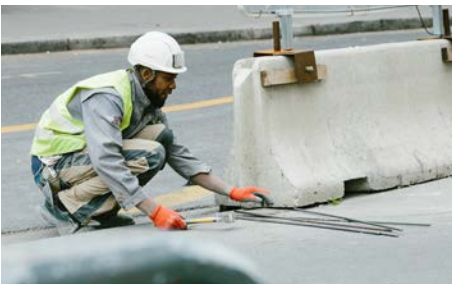


## Promote safety and enhance community health.

### Strategies:

- ♥ Identify **public safety risks** that have the greatest impact on health, safety and loss of life and mitigate the impacts.
- ♥ Protect the public by identifying, monitoring, and responding to public health threats.
- ♥ Promote **excellence in educational, medical, employment, and recreational opportunities**.
- ♥ Promote healthy living and access to vital health services.
  - Develop an ambulatory surgery center.
  - Enhance specialty services.
  - Attract Independent and Assisted Living Facility with Memory Care Skilled Nursing Facility.

# Land Use, Transportation and Infrastructure



**Improve coordination of economic development, land use, infrastructure, transportation, and natural resource planning.**

## Strategies:

- Provide **well-designed, functional, cost-effective** transportation, utility and public services to workplaces, neighborhoods, communities, and centers of economic activity.
- Create a **balance between natural resources and new development**.
- Balance **existing and future mining efforts** with reclamation land plans allowing for adaptive reuse of post mining lands for agriculture, parks, recreation and industrial development.
- Improve **gateways to communities to draw visitors and commerce**.
- Coordinate, Identify** appropriate **utility service areas** for efficient provision of utilities including Broadband.
- Improve infrastructure** – sidewalks, street lighting, stormwater drainage, roadways within population centers.
- Integrate connected transportation system** with multiple modes of transportation – highways, rail, air
- Build infrastructure capacity** through the County and its municipalities. Support opportunities for new manufacturing.
- Establish balance** of available lands and efficient use of facilities.



# Education / Workforce



**Diversify the County's economic base and create opportunities for an educated, ready workforce.**

## Strategies:

-  **Expand** the County's tax base and business-related revenue streams.
-  **Expand** employment opportunities through business growth and retention.
-  **Implement** innovative programs in collaboration with community partners to develop an educated and skilled workforce to meet existing and future needs.
-  **Capitalize** on the County's geographic strategic advantages.
-  **Support and encourage** a diversification of jobs creating business and industry.





# Economic Development



**Diversify the Hardee County Economy and create opportunities for an educated, ready workforce.**

## Strategies:

- Expand employment opportunities through **business growth and retention**.
- Identify programs and needs to **attract and retain targeted industries** in collaboration with local economic development partners.
- Recognize **existing economic development activities, business and industry** as a vital component of the long-term viability of the community.
- Diversify the economy** by establishing relationships between universities/local community colleges, regional research institutions and local businesses.
- Identify and target Green Industries and Technologies** including a wide variety of energy conservation, alternative energy and design/construction services for energy efficient building materials and equipment.
- Support and encourage** the core industries within the community including agriculture and agricultural support services.



# Recreation / Open Space / Environment



## Plan for the recreation, open space, and environmental needs of the County.

### Strategies:

-  Provide parks and recreation with quality recreational opportunities promoting economic development.
  - Provide **connectivity between neighborhoods, schools and recreation.**
  - Prioritize **development to enhance intra-county connectivity.**
-  Ensure provision of **sufficient parks, recreation facilities, and open space areas to meet the needs of residents and visitors.**
-  **Protect, conserve and restore** natural resources and ecological function.
-  Encourage **citizen engagement and partnerships** that support a balance of growth, infrastructure and natural resource preservation.





# Public Services and General Government



**Deliver excellent public services with a commitment to fiscal management, community engagement, and transparency.**

## Strategies:

- 🌐 Provide and maintain facilities and programs that are **available and accessible to all**.
- 🌐 **Promote activities** that bring our community closer together.
- 🌐 Operate in a fiscally responsible and stable manner.





# TEAM HARDEE



Hardee County  
FLORIDA

## Hardee County Board of County Commissioners

412 W. Orange Street, Room 103  
Wauchula, FL 33873

863-773-9430

[info@hardeecountyfl.gov](mailto:info@hardeecountyfl.gov)

[hardeecountyfl.gov](http://hardeecountyfl.gov)



Prepared by the  
Central Florida Regional Planning Council